

Remise le 21 NOV 2008

173
N°

AMS/MINRES/INC/DQ/DTC/CGT/UT

ATTESTATION DE MESURE DE SUPERFICIE

Superficie mesurée : 11,919 hectares
Demandeur : NGUTI COUNCIL FOREST
Echelle de référence : Mamfé à 1/200.000
Circonscription Administrative : Département(s) Kupe Muanengouba
Arrondissement (s) Nguti

Mme JOSSE Néd TASSEY EUC
AGRE CONTRACTUEL D'ADMINISTR
CHIEF LE SERVICE DES VENTES L'ING.

BOUNDARY DESCRIPTION OF THE NGUTI COUNCIL FOREST

The point A (base) of this forest is located at the river junction of Ayib-Eyang and Bake River. Its UTM coordinates are X = 539 082; Y = 583 022.

The boundary of this forest passes through the following points A to X then its UTM coordinates are as follows:

	A	B	C	D	E	F	G	H
X	539 082	535 873	534 776	534 776	533 140	533 003	532 902	532 902
Y	583 022	577 433	576 159	576 445	576 445	576 450	576 440	576 188

	I	J	K	L	M	N	O	P
X	532 835	529 440	530 334	523 570	524 816	526 905	527 508	527 394
Y	575 597	577 485	576 605	581 120	581 727	582 349	583 312	583 593

	Q	R	S	T	U	V	W	X
X	526 545	523 447	520 568	519 990	527 781	531 257	535 336	535 445
Y	584 278	585 198	585 462	586 145	587 716	588 130	585 433	584 601

East : - From point A located at the river junction from Ayib-Eyang with Bake river following Bake river downstream to point B still along the Bake river, which is the south western limit of the REPACIG CIG Community Forest and still in a south-westerly direction to point C.

South : - Then from point C following a straight line on a bearing of 360 degrees for a distance of 0,3km to point D.

- From point D following a straight line on a bearing of 270 degrees for a distance of 1,6 km to point E located at Babong river.
- From point E following Babong river downstream to point F where a foot path is crossing Babong river.
- From point F following the foot path in western direction to point G.
- From point G following a straight line on a bearing of 180 degrees for a distance of 0,3 km to point H located at Babong river.
- From point H following river Babong downstream until point located at the junction of Babong river with Bake river.
- From point I moving in a north westerly direction to point J along river Bake north of Sikam village and then still following the river Bake to point K, which is at the confluence between the rivers Bake and MADie, marking the north eastern boundary of the Korup National Park.

West :

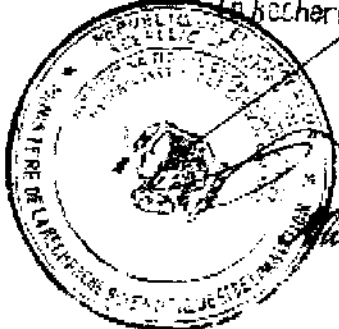
- From point K following the boundary of the Korup National Park along river Bake to point L.
- From point L following a straight line on a bearing of 64 degrees for a distance of 1,4 km to point M located at the junction of the stream Monyen-cton with an abandoned farm to market road from Baro to Sikam.
- From point M following a straight line on a bearing of 73 degrees for a distance of 2,2 km to point N located at a river junction of not named rivers.
- From point N following a straight line on a bearing of 31 degrees for a distance of 1,1 km to point O located on the abandoned logging road from Baro to Osirayib and named "Otto Green".
- From point O following a straight line on a bearing of 331 degrees for a distance of 0,3 km to point P located at a river junction of not named rivers.
- From point P following a straight line on a bearing of 310 degrees for a distance of 1,1 km to point Q located at a river junction of not named rivers.
- From point Q in a straight line on a bearing of 286 degrees for a distance of 3,2 km to point R located at the source of the stream Bayas near the footpath from Baro to Abat.
- From point R following the stream Bayas downstream to reach point S located at the junction of Bayas with Bake river.
- From point S following Bake river downstream in northerly direction to point T located at the junction of Bake with a not named affluent.

- North :**
- From point T following the not named affluent upstream in easterly direction to point U located at one of the sources of this stream.
 - From point U following a straight line on a bearing of 86 degrees for a distance of 0,6 km to point V located at the source of a not named stream.
 - From point V following the not named stream downstream in easterly direction to point W located at the junction with another not named stream.
 - From point W following a straight line on a bearing of 172 degrees for a distance of 0,8 km to point X located at the source of the stream Ayib-Eyang.
 - From point X following Ayib-Eyang downstream to reach again the point of origin A, located at the junction of Ayib-Eyang with Bake river.

The zone described above covers a surface area of Eleven thousand nine hundred and nineteen hectares.

This attestation has been issued to serve whenever need arises.

POUR LE DIRECTEUR GENERAL
ET PAP DELEGATION
Le Chef de Division de
La Recherche Géographique

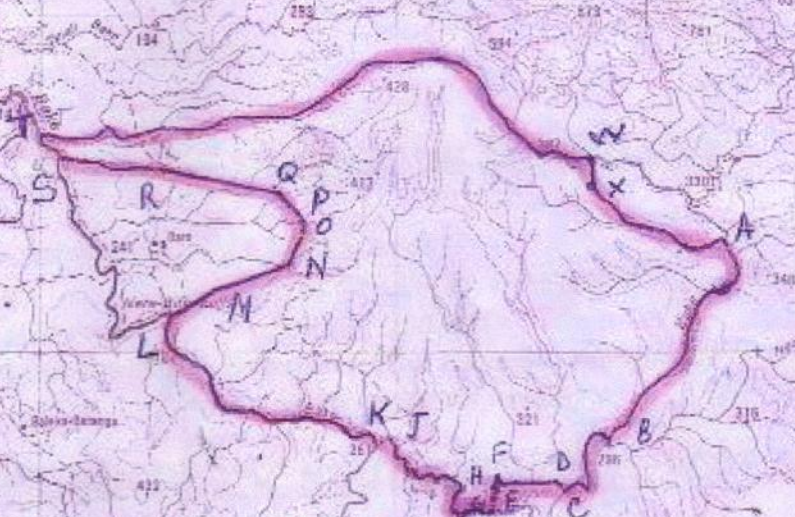


Michel Simon Koumoum
DOCTEUR D'ETAT ES LETTRES

Flajo

21 NOV 2005

Min. JASS N. TORO
DIRECTION GENERALE DE L'ADMINISTRATION
CHIEF DE SERVICE DES PENTES D'ING.



POUR LE DIRECTEUR GENERAL
ET PAR DELEGATION
Le Chef de Division de
la Recherche Géographique



Michel Simon Kamden
DOCTEUR D'ETATS LETTRES